



### Information Statements

An earthquake has occurred or a tsunami warning, watch, or advisory has been issued for another section of the ocean. In most cases, information statements are issued to indicate there is NO threat of a destructive tsunami in your area.

### Tsunami Watch

A potentially dangerous distant seismic event has occurred which may later impact the watch area with a tsunami. Be ready to take action if a warning is issued.

### Tsunami Advisory

A potential tsunami which may produce strong currents or waves exist. Significant widespread inundation is not expected.

### Tsunami Warning

A potential tsunami with significant widespread inundation is imminent or expected. Widespread, dangerous coastal flooding accompanied by powerful currents is possible and may continue for several hours after the arrival of the initial wave.



www.stormready.noaa.gov

## Any Questions Please Contact

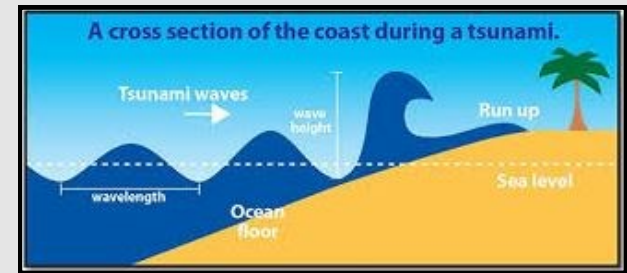
Beaufort County Sheriff's Office  
Emergency Management Division  
843-255-4000

Or

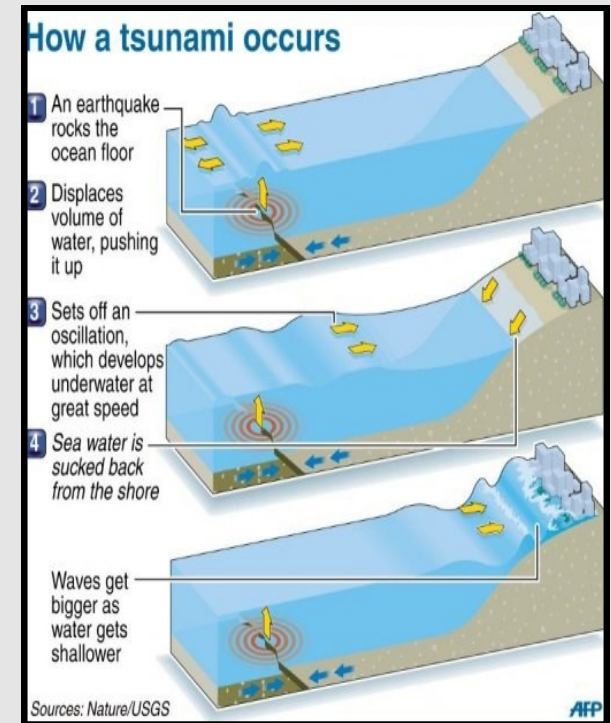
Town of Hilton Head Island  
Emergency Management Division  
843-682-5156



## Are you Tsunami Ready?



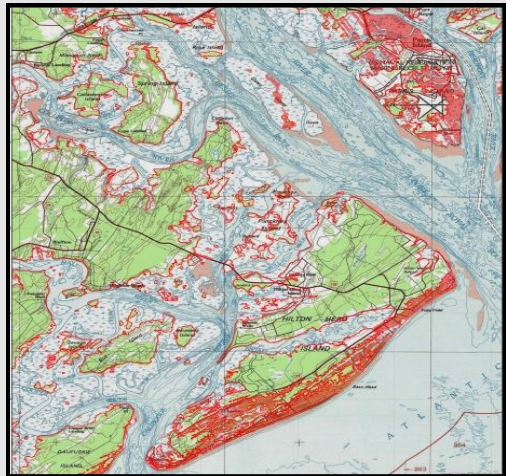
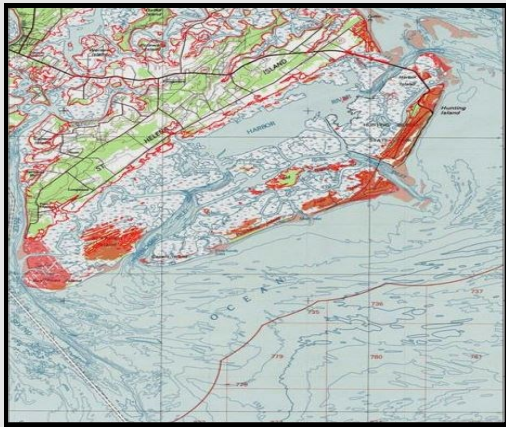
A tsunami is a very large wave, often caused by an earthquake, that flows onto the land.



# What is a Tsunami?

A tsunami is a vast volume of seawater in motion, extending from the surface to the ocean floor. It is a series of long-period waves created by an abrupt disturbance that displaces a large amount of water.

According to the studies Beaufort County has a low risk of a tsunami impacting the County. The below maps display the possible inundation of water if there is a tsunami in Beaufort County



# What should you do?

- If you are in school and you hear there is a tsunami warning, you should follow the advice of the teachers and other school personnel.
- If you are at home and hear there is a tsunami warning, make sure your entire family is aware. Prepare a family emergency plan beforehand so that everyone knows what to do. Your family should evacuate your house if you live in a tsunami evacuation zone. Follow the advice of local emergency and law enforcement authorities.
- If you are at the beach or near the ocean and you feel the earth shake, move immediately to higher ground. DO NOT WAIT for a tsunami warning to be announced. Stay away from rivers and streams that lead to the ocean just as you would stay away from the beach and ocean if there is a tsunami. A tsunami from a local earthquake could strike some areas before a tsunami warning can be announced.
- Tsunamis generated in distant locations will generally give people enough time to move to higher ground. For locally generated tsunamis, where you might feel the ground shake, you may only have a few minutes to move to higher ground.
- High, multi-story, reinforced concrete hotels are located in many low-lying coastal areas. The upper floors can provide a safe place to find refuge should there be a tsunami warning and you cannot move quickly inland to higher ground. Homes and small buildings located in low lying coastal areas are not designated to withstand tsunami impacts. Do not stay in these structures should there be a tsunami warning.
- Offshore reefs and shallow areas may help break the force of tsunami waves, but large and dangerous waves can still be a threat to coastal residents in these areas. Staying away from all low-lying coastal areas is the safest advice when there is a tsunami warning

**HAVE A FAMILY EMERGENCY PLAN**

## Hilton Head Island Hazard Zone

- Sea Pines Plantation
- All beach front property and property up to William Hilton Parkway
- All of Folly Field to include Port Royal Plantation
- Persons from the above stated areas should go to a designated Tsunami Reunification Area, seek higher ground or move inland

## Fripp, Hunting & Harbor Island Hazard Zone

- All three Islands are hazardous zones and must be evacuated
- All persons from the above stated areas should go to a designated Tsunami Reunification Area or move inland.

## Beaufort County Coastal Waterways Hazard Zone

- Persons or homes along Beaufort County waterways could be in danger and should seek higher ground or move inland.

## Tsunami Reunification Areas

- Hilton Head High School
- St. Helena Elementary School.



## Tsunami Evacuation Route

- William Hilton Pkwy/US 278
- Sol Blatt Cross Island Pkwy
- Sea Island Pkwy/US 21

