

BEAUFORT COUNTY SHERIFF'S OFFICE



2
0
0
8



ANNUAL REPORT

Mission Statement

The primary mission of the Beaufort County Sheriff's Office is to provide a safe and secure environment for Beaufort County residents and visitors. Our goals are to seek, understand and address the underlying issues that lead to calls for service.

These goals will be accomplished through the aggressive enforcement of state and local laws along with community-involved policing. We believe that these collaborative efforts and enhanced problem solving techniques will significantly improve the quality of life for Beaufort County residents and will enhance the experience of our visitors.



Values

- Maintain agency integrity and credibility
- Respect the rights of the individual, evidenced through implementation of ethical and humanitarian policies and procedures
- Recognize the importance of Sheriff's Office personnel, evidenced by maintaining a work environment that facilitates professional growth
- Maintain fiscal responsibility and accountability
- Create and maintain community partnerships by providing opportunities for citizen volunteer involvement

Published by:

Beaufort County Sheriff's Office
2001 Duke Street
Beaufort, South Carolina 29902
(843)470-3200

Prepared by:

Natalie Johnston, Executive Assistant

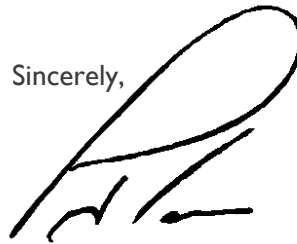
Message from the Sheriff	1
Office of the Sheriff	2
Drug Analysis Lab	3
Evidence Section	4
Office of Professional Responsibilities	
Recruiting Section	5
Training/Support	
Reserve Deputy Sheriff Program	
Crime Prevention Specialist	
Memorandum Enforcement	
Citizen's Police Academy	6
Enforcement Division	7
Patrol	9
Investigations	
Joint Enforcement Traffic Team	10
Marine and Beach Patrol	
Animal Control	11
Airport Security	
Victim's Advocacy	12
Sex Offender Registry	
Special Weapons & Tactics (SWAT)	13
Dive Team	
Robot Team	
Patrol/Narcotic Dog	
Explosive/Cadaver Dog	
K-9 Tracking Team	
Multi-Jurisdictional Drug Task Force	14
Administrative Division	15
Warrants	17
Civil Process	18
General Sessions	19
Courthouse Security	
Criminal Records	20
Criminal Intelligence	
Juvenile Services	
SRO Program	21
Fresh Start Program	22
S.M.A.R.T. Program	
Crisis Negotiations	23
Litter Control	
Statistics Summary	24

To the Citizens of Beaufort County

The Beaufort County Sheriff's Office strives to keep a constant watch on crime trends in order to better inform our residents and guests of proactive steps that can be taken to deter neighborhood crime. Since Beaufort County is one of South Carolina's fastest growing counties, this can be a challenge as the demographics, landscape and communities are ever changing. We are poised to meet that challenge as our deputies are equipped with some of the best law enforcement equipment and training in the state.

As you may already know, I am privileged to have grown up here and to have experienced the majority of my law enforcement career here. I consider the job of protecting Beaufort County's quality of life (see below) as not only a professional goal, but as a personal mission. If you ever have any questions or suggestions to help with this mission, please feel free to call my office. I believe that together, we can improve the quality of life for all, while making safety our most important goal.

Sincerely,



P.J. Tanner
Sheriff

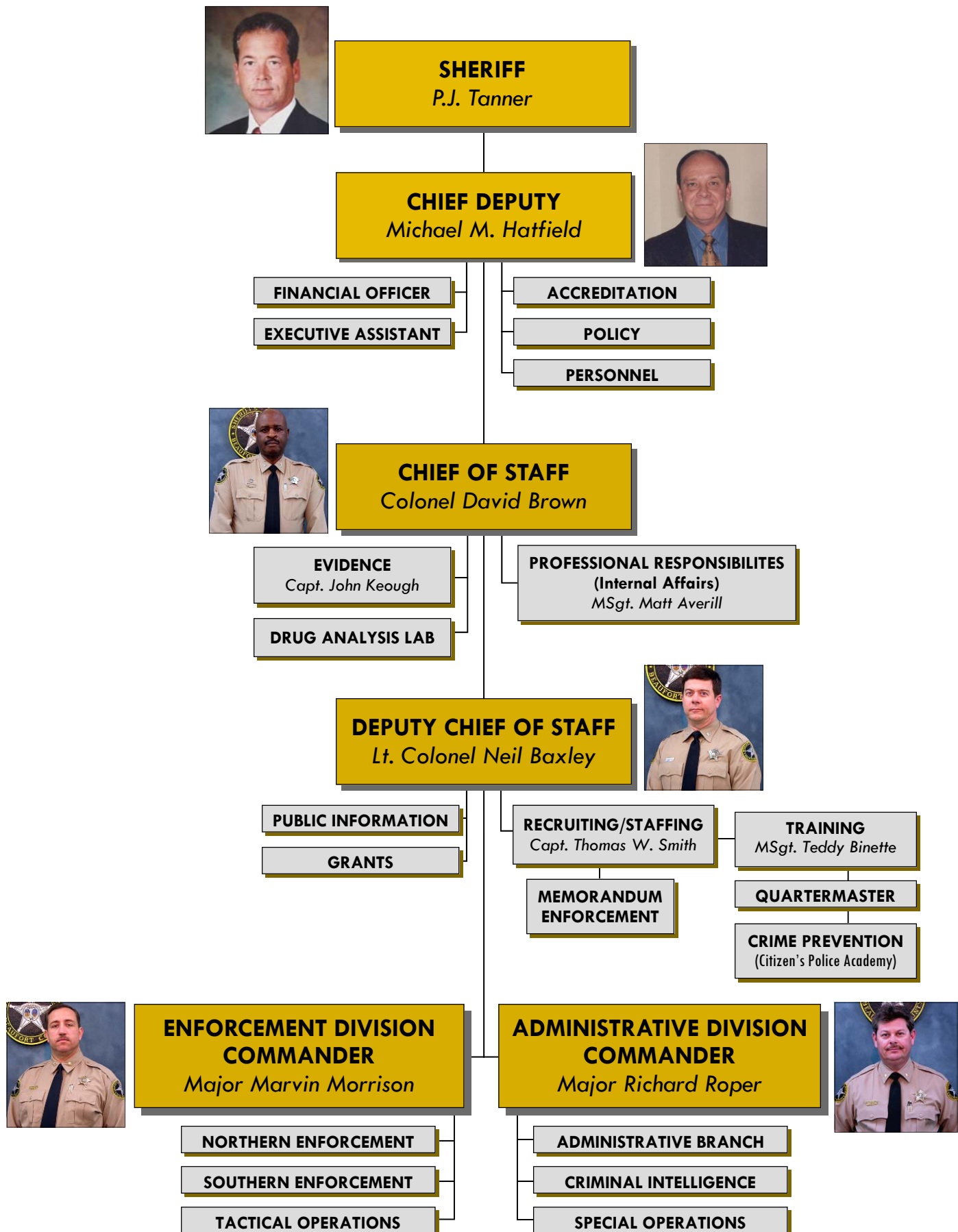


National Geographic Adventure lists Beaufort as a top town

National Geographic Adventure magazine has rated Beaufort, South Carolina in its list of 50 Best Adventure Towns.

The magazine's September 2007 issue names the country's best places to live, play and seek adventure. Of these, **Beaufort was named one of the nine best waterfront towns.**

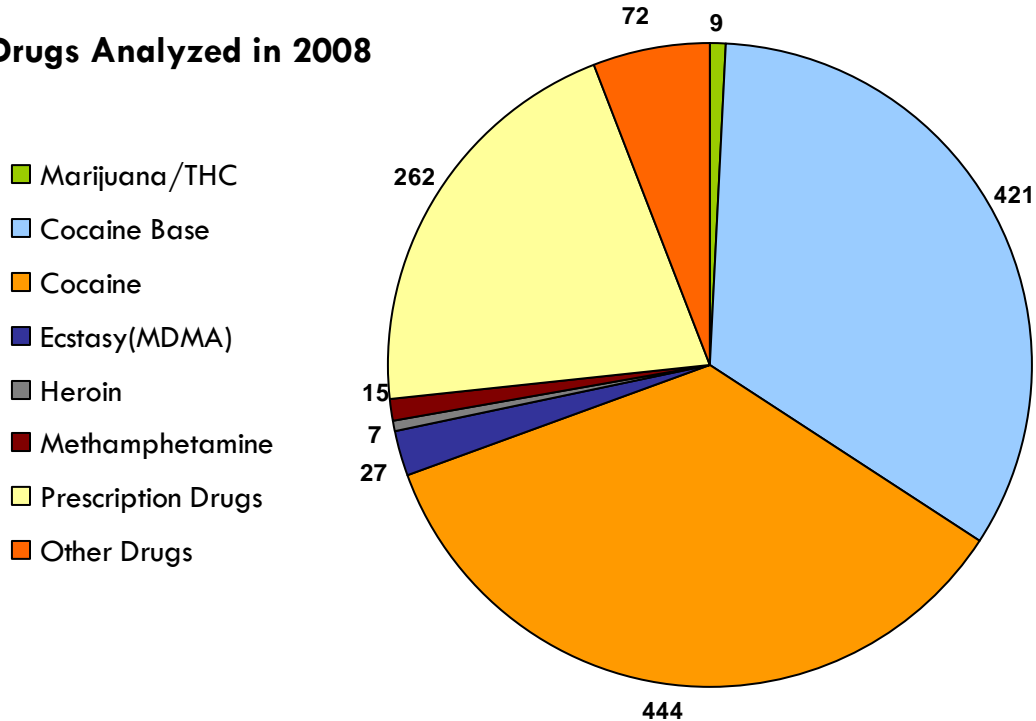
(National Geographic Adventure Magazine can be accessed online at <http://www.nationalgeographic.com/adventure>.)



Drug Analysis Lab

Sheriff Tanner, through the use of Federal Grants, has established Beaufort County's first Drug Analysis Lab. Before this facility was established, suspected drugs seized by law enforcement were sent to the South Carolina Law Enforcement Division for analysis. This in-house lab enables the Sheriff's Office to readily identify various drugs seized within the county.

Drugs Analyzed in 2008



AGENCY SUBMISSIONS

Allendale Police Department	1	Hampton Police Department	8
Allendale County Sheriff's Office	4	Hardeeville Police Department	17
Beaufort County Sheriff's Office	170	Jasper County Sheriff's Office	138
Beaufort Police Department	31	Multi-Jurisdictional Drug Task Force	258
Bluffton Police Department	15	Plantation Security	1
Colleton County Sheriff's Office	59	Port Royal Police Department	4
Cottageville PD	8	Ridgeland Police Department	16
Department of Natural Resources	1	SC Highway Patrol	19
Estill Police Department	2	USC Beaufort Security	1
Fairfax Police Department	9	Walterboro Public Safety	14
Hampton County Sheriff's Office	65	Yemassee Police Department	20
Total Submissions			861

Evidence Section

The mission of the Evidence Section is to provide preservation, safekeeping, and accountability for all items that investigating officers deem significant to case investigations.

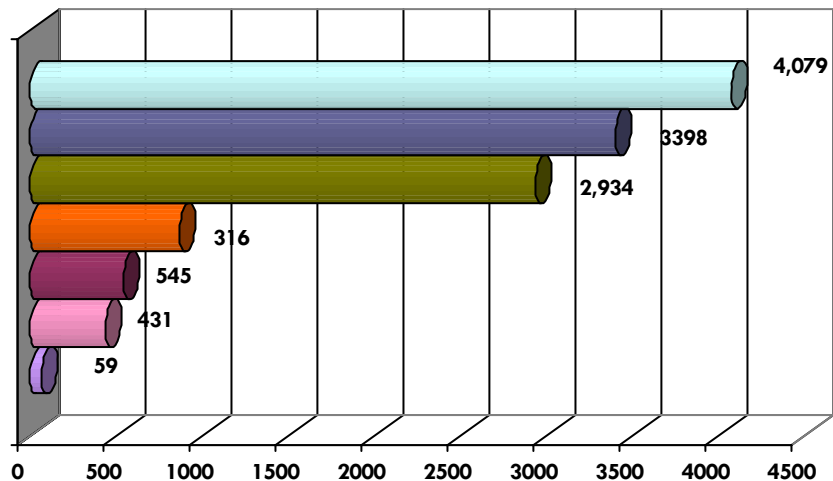
Captain John Keough manages this section. He is assisted by two officers and one technician.



Captain John Keough

Evidence Section 2008 Statistics

- Submissions
- Cases
- Case Disposal
- Marijuana Samples
- Marijuana Cases
- DNA Items
- Weapons Destroyed



Office of Professional Responsibility



Master Sergeant Matt Averill

The Office for Professional Responsibility (OPR) is an administrative investigative section within the Sheriff's Office specifically designated to fully investigate formal complaints lodged by citizens who believe that a law enforcement situation has not been handled satisfactorily. This procedure allows for the protection of the interests of both the citizen and the law enforcement officer. Master Sergeant Matt Averill, OPR for the Beaufort County Sheriff's Office, investigates all warranted complaints against Department personnel.

Master Sergeant Averill is also a state licensed polygraph examiner. In the year of 2008, he conducted 107 Criminal Specific polygraph examinations and 57 pre-employment polygraph examinations.

Training/Support Section

The Training/Support Section of the Beaufort County Sheriff's Office, supervised by Master Sergeant Teddy Binette, is responsible for all aspects of Sheriff's Office training, class preparation, annual re-qualification, certification, equipment supply, uniform supply and other administrative tasks as directed by the Sheriff or the Administrative Division Commander.

Recruiting Section

Comprised of over 200 law enforcement officers, the Beaufort County Sheriff's Office is among the most competitive agencies in the Southeast. Based upon experience and education, starting salaries range from \$15.28 to \$29.89 per hour. Beaufort County Sheriff's Office pay and longevity policies enable our officers to continually receive salary increases at set intervals based upon evaluation and performance.

Managed by Captain T.W. Smith, the Recruiting Section received 243 applications during the year of 2008 and hired 23 of those applicants.

Reserve Deputy Sheriff Program

The Reserve Deputy Sheriff Program is a volunteer program that provides Beaufort County citizens with opportunity to gain law enforcement training and experience as they perform a much needed and appreciated service for their community. Those accepted into this program must participate in a minimum of 70 hours of training.

The Beaufort County Sheriff's Office had 12 active Reserve Deputies at the end of 2008.

Memorandum Enforcement

The Memorandum Enforcement Section is responsible for locating residents who have failed to pay their Beaufort County property taxes and for issuing letters to these delinquent taxpayers, explaining the law regarding county property tax and the penalties for disregarding tax notices.

In 2008, 2,067 letters were issued to Beaufort County citizens in reference to unpaid Beaufort County property taxes. This resulted in the collection of \$131,963 in property tax revenue.

Crime Prevention Specialist

The Beaufort County Sheriff's Office Crime Prevention Specialist is responsible for all community and business crime prevention initiatives within the jurisdiction of the Sheriff's Office. This includes, but is not limited to, Neighborhood Watch programs, community and business security surveys, specific crime reduction strategies and child safety programs.

For more information on crime prevention seminars and security surveys, please contact Staff Sergeant Mike Jennings at (843)470-3287 or visit the Beaufort County Sheriff's Office website at www.bcsos.net.



The Citizen Police Academy (CPA) is a community oriented program designed to provide interested citizens with quality interactive training regarding law enforcement activity in Beaufort County. Since the CPA's inception in 2002, twenty-two sessions have been offered during which over 1,000 Beaufort County citizens have enrolled as students.

Class participants learn about the various aspects of the Sheriff's Office and have face time with the department's decision and policy makers. Topics discussed include enforcement, criminal investigations, civil process, warrants, juvenile services, training, homeland security, drug enforcement, traffic enforcement, special teams, gangs, budget process, and many more.

CPA students are able to participate in interactive demonstrations such as our *Walk in Our Shoes, D.U.I. Fatal Vision* and *CSI* scenarios, which provide a snapshot of what law enforcement officers may encounter from day-to-day. Also, included is a *Citizen Ride-Along*, and a field trip to our Emergency Management Center and to our range facility for a showcase of some of our specialized equipment and for demonstrations by our Crisis Negotiations, S.W.A.T. and K-9 Teams.

Finally, each session concludes with a highly interactive chat session with Sheriff P.J. Tanner.



Any Beaufort County citizen wishing to attend the Citizens Police Academy must be at least 18 years of age, must pass the Sheriff's Office criminal history check and must receive favorable recommendations from all personal and professional references. For more information on the CPA application process, you may contact Staff Sergeant Mike Jennings at (843)470-3287 or Captain T. W. Smith or at (843) 470-3292.

Enforcement Division

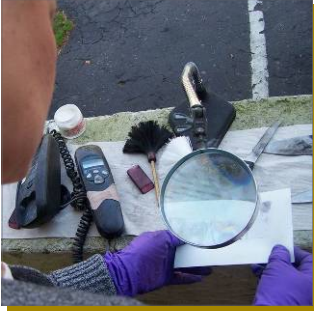
Patrol

Investigations

Joint Enforcement
Traffic Team

Marine/Beach Patrol

Victim's Advocacy
Program



Sex Offender Registry
Management

Animal Control

Airport Security

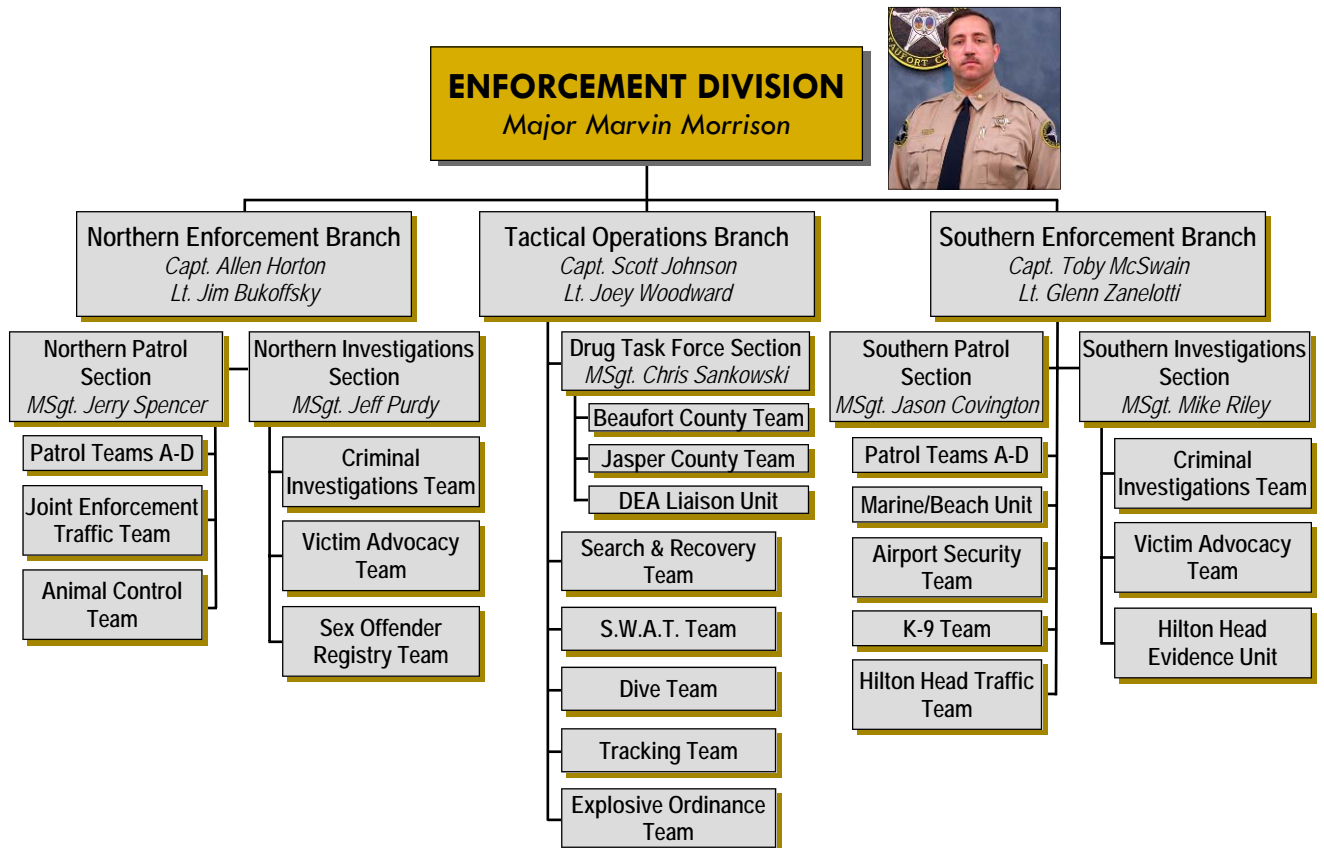
Drug Task Force

SWAT Team

K-9 Teams



The Beaufort County Sheriff's Office Enforcement Division is responsible for all uniformed patrol functions and investigative procedures throughout the county. Staffed by over 157 law enforcement officers, this division is comprised of the following sections: Enforcement Patrol, Investigations, Victim's Advocacy, Sex Offender Registry Management and Marine/Beach Patrol, Animal Control, Airport Security, Joint Enforcement Traffic Team (JETT), Drug Task Force (DTF), Search & Recovery, and Tactical Operations.



During 2008, these deputies responded to over 114,060 calls for service. In addition to responding to calls for service, they conduct investigations, lend support to victims and their families, register sex offenders, serve warrants, conduct traffic stops and initiate proactive calls to businesses and residences.

Commanded by Major Marvin Morrison, the Enforcement Division is divided into three branches. The Northern Enforcement Branch, managed by Captain Allen Horton, includes the Beaufort County territory north of the Broad River Bridge. The Southern Enforcement Branch, managed by Captain Toby McSwain, includes the Beaufort County territory south of the Broad River Bridge. And the Tactical Operations Branch, managed by Captain Scott Johnson, consists of specially trained Sections (commonly referred to as DTF, SWAT, K-9, etc.) who are equipped to respond to non-traditional law enforcement situations.

Enforcement Patrol

2008 Patrol Activity

Reports: 16,882

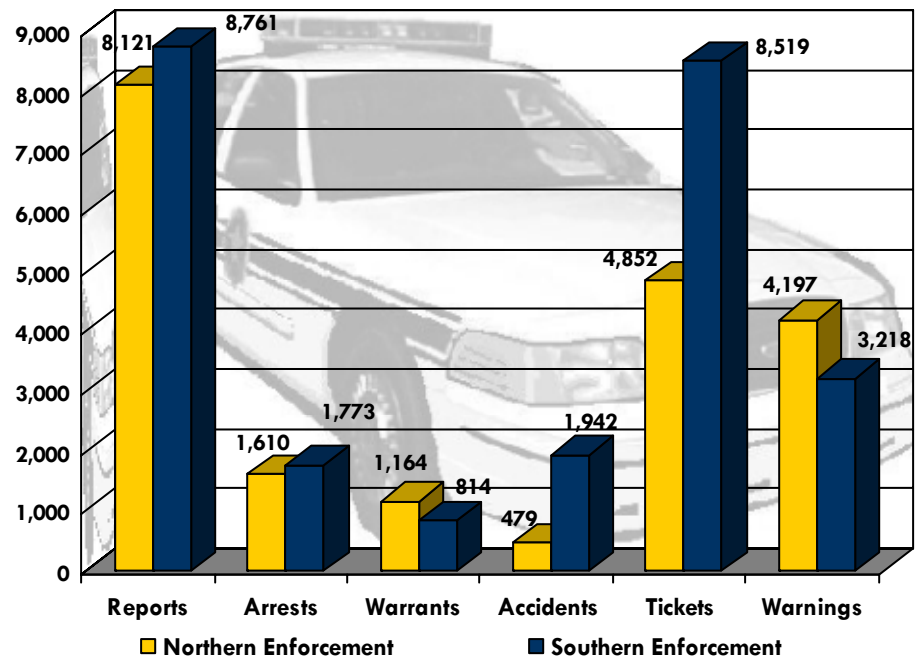
Accidents: 2,421

Warrants: 2,007

Tickets: 13,371

Warnings: 7,415

Arrests: 3,383

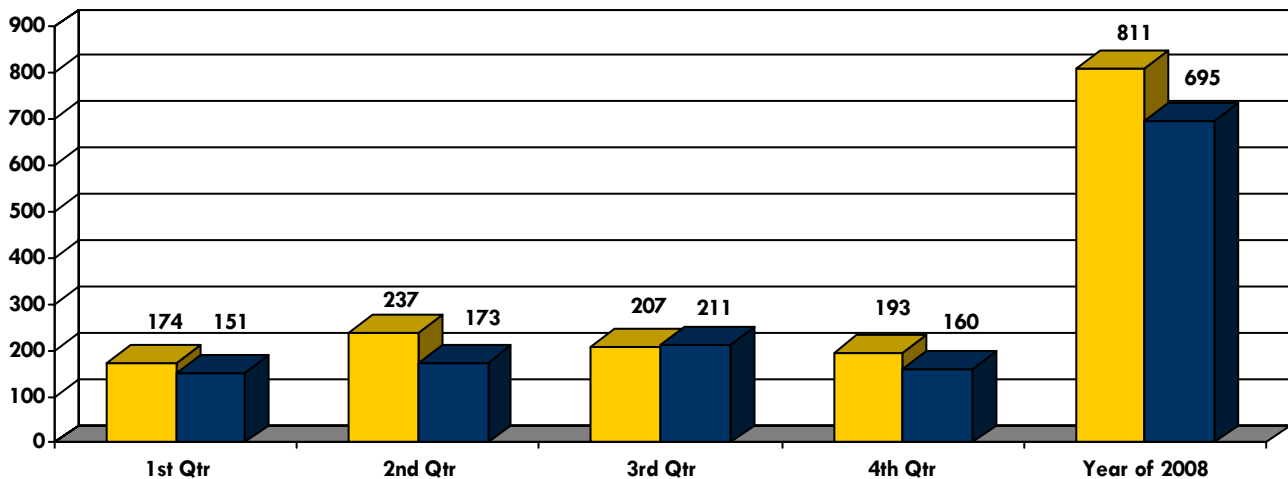


Investigations

The Beaufort County Sheriff's Office Investigations Section is responsible for all follow-up criminal investigations not assigned to the Patrol Section. Nine investigators are assigned to the Northern Enforcement Branch and nine are assigned to the Southern Enforcement Branch.

■ Northern Investigators
■ Southern Investigators

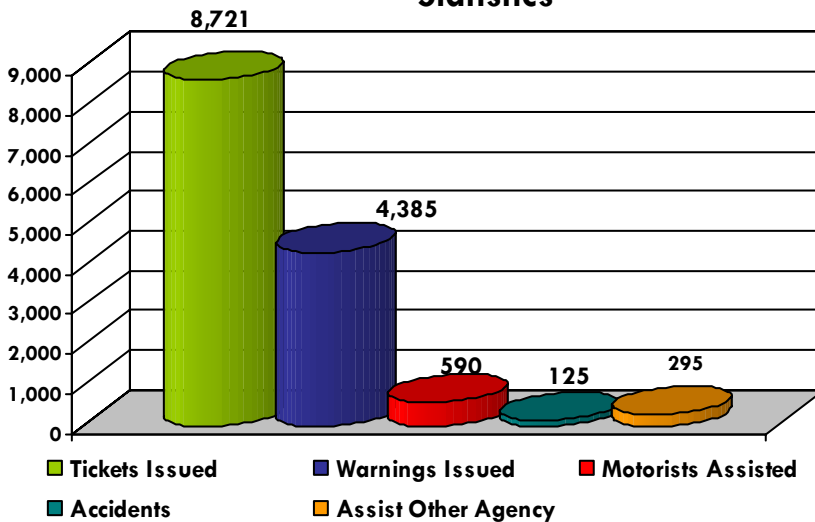
2008 Cases Investigated



Joint Enforcement Traffic Team

Comprised of officers from the Beaufort County Sheriff's Office, Beaufort Police Department, Yemassee Police Department, and South Carolina Highway Patrol, the Joint Enforcement Traffic Team aides in traffic enforcement throughout northern and southern Beaufort County. This section utilizes a variety of specialized vehicles, such as Harley and BMW motorcycles, Dodge Chargers and Ford Crown Victorias, which afford enhanced detection of traffic violations and maneuverability in congested areas.

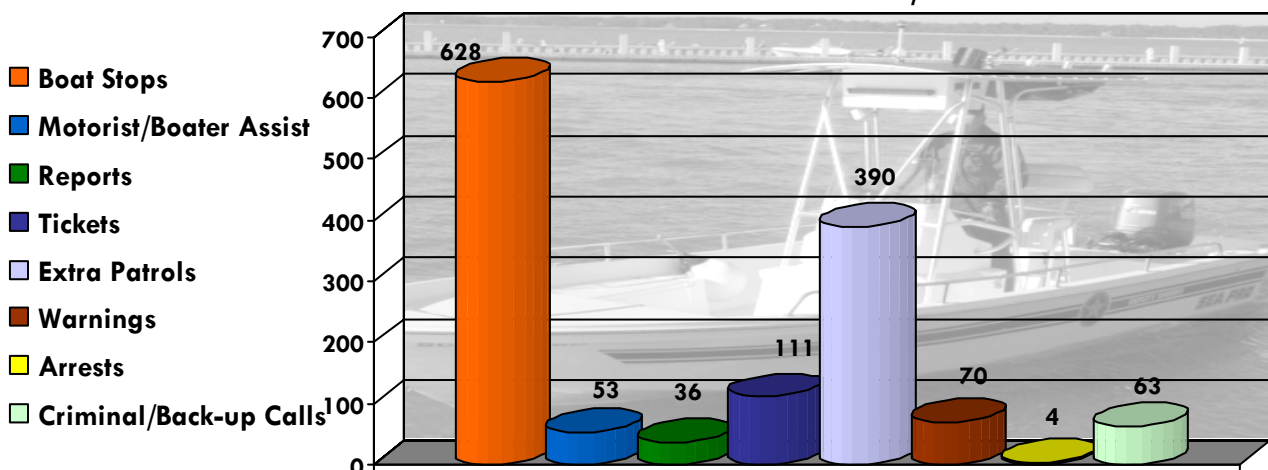
2008 Joint Enforcement Traffic Team Statistics



Marine/Beach Patrol

Assisted by the Department of Natural Resources and the U.S. Coast Guard, the Beaufort County Sheriff's Office Marine/Beach Patrol Section provides year-round service to Beaufort County residents and guests who visit our beaches and waterways. Seasonal beach patrol is also provided for the public beaches on Hilton Head Island and Hunting Island State Park with the use of all-terrain vehicles. This section utilizes two watercraft, ranging in size from 22 feet to 24 feet.

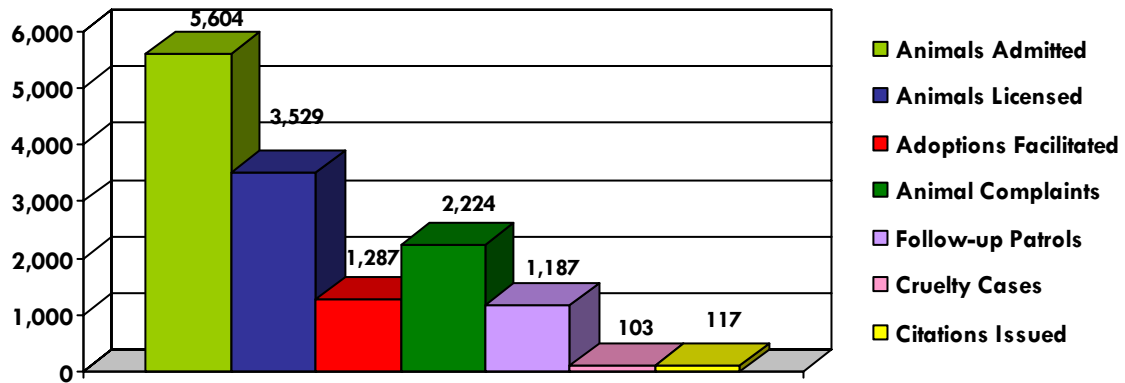
2008 Marine/Beach Patrol Statistics



Animal Control

The Animal Control Section of the Beaufort County Sheriff's Office works to promote responsible pet ownership, prevent the spread of animal borne diseases and protect the public by seizing unrestrained animals roaming throughout the county. This section is also responsible for providing a temporary shelter for stray and unwanted animals, for maintaining a vigorous program to reunite stray pets with owners and for providing a successful adoption program for those animals.

Animal Control 2008 Statistics



Airport Security

The Beaufort County Sheriff's Office Airport Security Program is designed to safeguard the civil aviation industry and the traveling public of Beaufort County. In order to ensure a safe and secure environment in which airport tenants may conduct business, Airport Security Officers identify security problems and offer recommendations toward corrective action. They also serve as liaison between Federal Aviation Administration (F.A.A.) civil security personnel and other law enforcement agencies who are tasked with aviation security responsibilities.

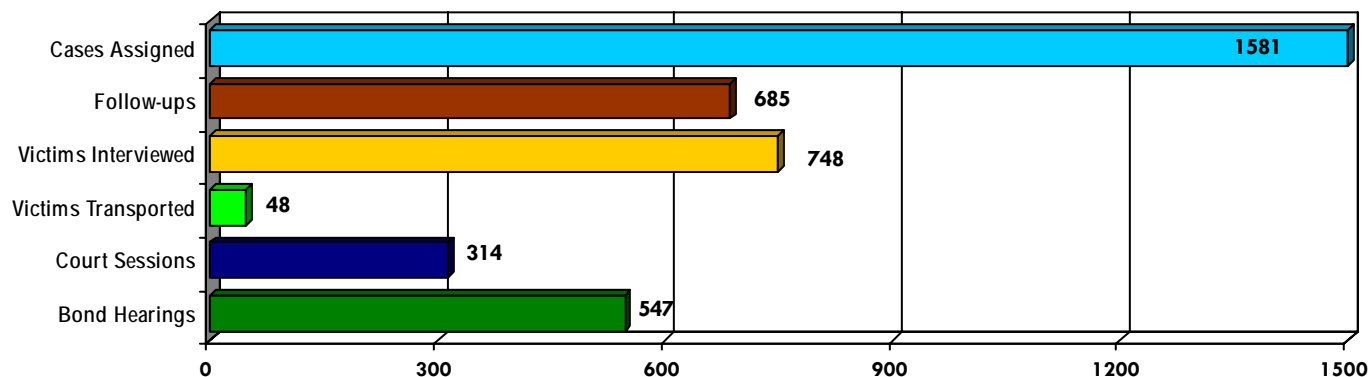


Aerial view of the Hilton Head Airport

Victim Advocacy Program

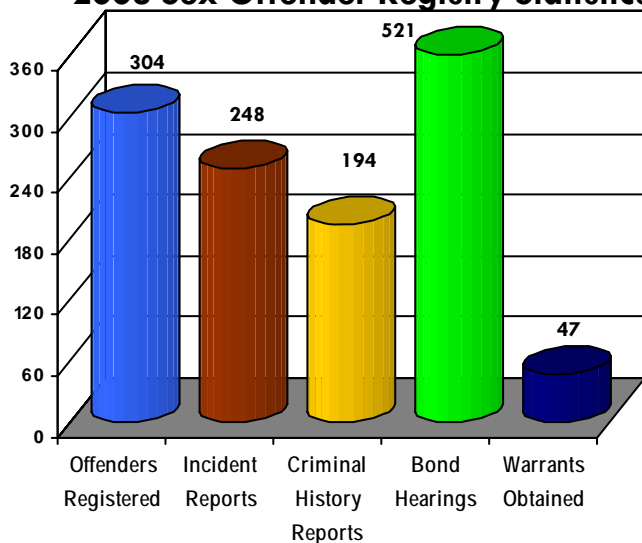
The Beaufort County Sheriff's Office Victim Advocacy Program is designed to serve as liaison between the State and the victim, lending support to the victim and family members. Our four Victim Advocates are familiar with all statutes of law pertaining to victim rights and work to ensure that the Sheriff's Office protects those rights.

2008 Victim Advocacy Statistics



Sex Offender Registry Management

2008 Sex Offender Registry Statistics

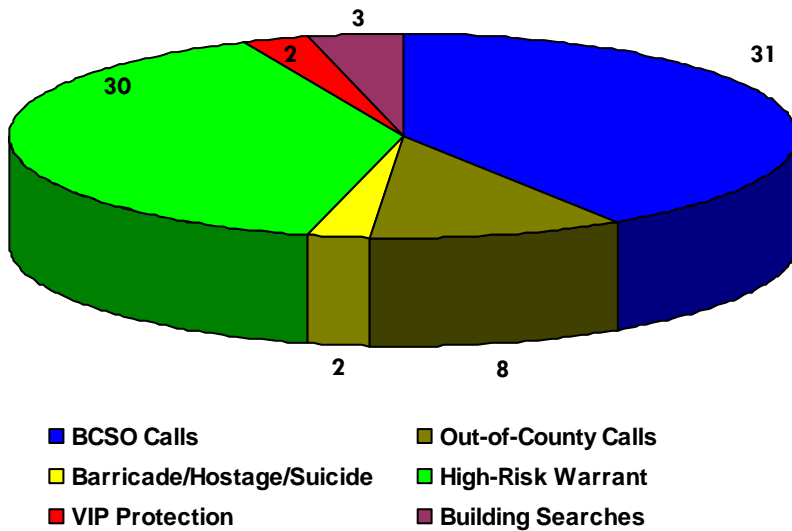


According to state statute (Statute 23-3-400), the sheriff of each county is responsible for registering all sex offenders convicted of offenses that warrant registration and for maintaining a file on each offender to include a fingerprint card, current rap sheet, registration form, and photograph of the offender. When a convicted sex offender fails to register with Beaufort County Sheriff's Office, the appropriate action is taken to affect the registration (Statute 23-3-450). These state statutes can be viewed on the South Carolina Law Enforcement Division website at www.sled.state.sc.us.

Special Weapons and Tactics Team (S.W.A.T.)

Specialized training and equipment enable the Special Weapons and Tactics Team (S.W.A.T.) to handle non-traditional and/or life-threatening situations more effectively than regular law enforcement units. The S.W.A.T. Team assists in cases involving such situations as downed officer/citizen rescues, barricaded suspects, hostage rescues, drug raids, attempted suicides, high risk warrant services and VIP escorts. This team also assists with specialized training for deputies in other units and lends support in specialized operations conducted by other agencies.

2008 S.W.A.T. Team Operations



Dive Team Calls Year of 2008

Body Recoveries	2
Evidence Recoveries	7
Vehicle Recoveries	1

Robot Team Calls Year of 2008

Suspicious Packages	1
Assist SWAT	1
Assist SLED Bomb Squad	1
Demonstrations	7

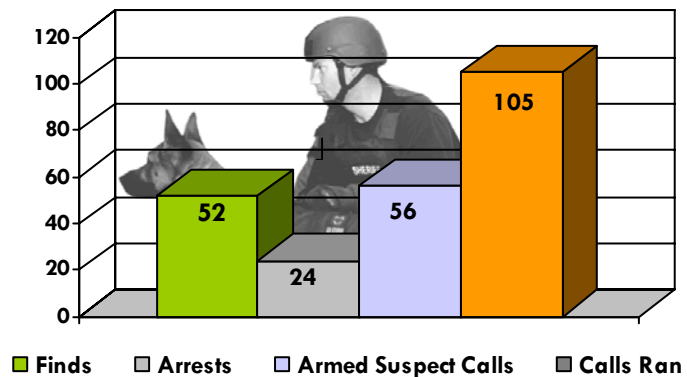
K-9 Unit

The Beaufort County Sheriff's Office maintains a full service K-9 Unit that is divided into three teams: the Patrol/Narcotic Team, the Tracking Team and the Explosive/Cadaver Team. This unit utilizes specific breeds of dogs to carry out specific tasks. For example, Labrador Retrievers for drug detection, and German Shepherds for detecting explosive devices and deceased persons.

Patrol/Narcotic Dog & Explosive/Cadaver Dog Year of 2008

Drug Searches	8,025
Drug Finds	87
Criminal Tracks	10
Criminal Finds	2
Evidence Searches	8
Building Searches	1
School Searches	20
Prison Searches	6

2008 K-9 Tracking Team Statistics



Multi-Jurisdiction Drug Task Force

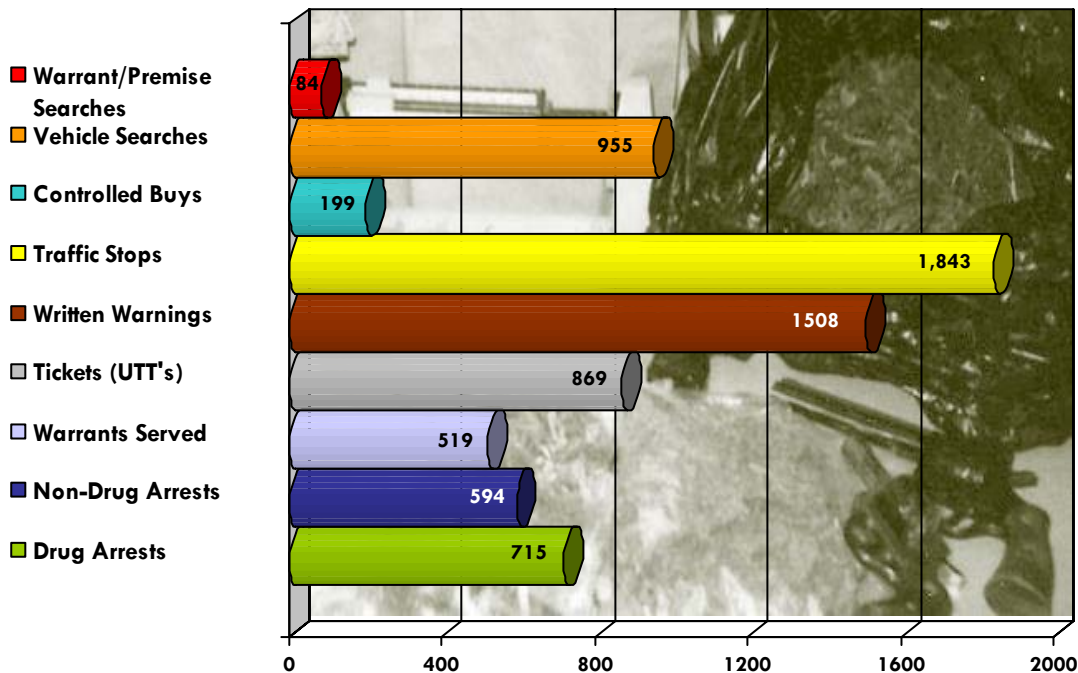
The Multi-Jurisdiction Drug Task Force consists of law enforcement officers from the Beaufort County Sheriff's Office, the Beaufort Police Department, the Jasper County Sheriff's Office and the Naval Investigative Service (N.I.S.) who focus on the investigation of illegal drug activity and street crime. They use investigative techniques such as drug information collection and storage, use of informants, controlled drug buys, reverse "sting" operations, surveillance, interdiction methods, and undercover operations. These methods are used to produce evidence resulting in the arrest and prosecution of criminals.

The Drug Task Force is dedicated to reducing the flow of illegal drugs in Beaufort County and other communities throughout the State of South Carolina. They work to identify, arrest, and prosecute violators who illegally possess, use, distribute or manufacture illicit drugs. The removal of these criminals from our community plays a significant part in reducing the commission of violent and drug-related street crimes. This reduction in occurrence of violent street crime creates a better environment for all Beaufort County residents as well as for our visitors and guests.

PROPERTY/CURRENCY SEIZURES	
Seized Vehicle Value	\$70,765
Currency Seized	\$276,777
Weapons Seized	50
Vehicles Seized	17

DRUGS SEIZED BY WEIGHT	
Cocaine	4,535 g
Crack	595 g
Marijuana	8,712 g
	6 plants

2008 Drug Task Force Statistics



Warrants
Civil Process



Courthouse Security

General Sessions
Coordinator



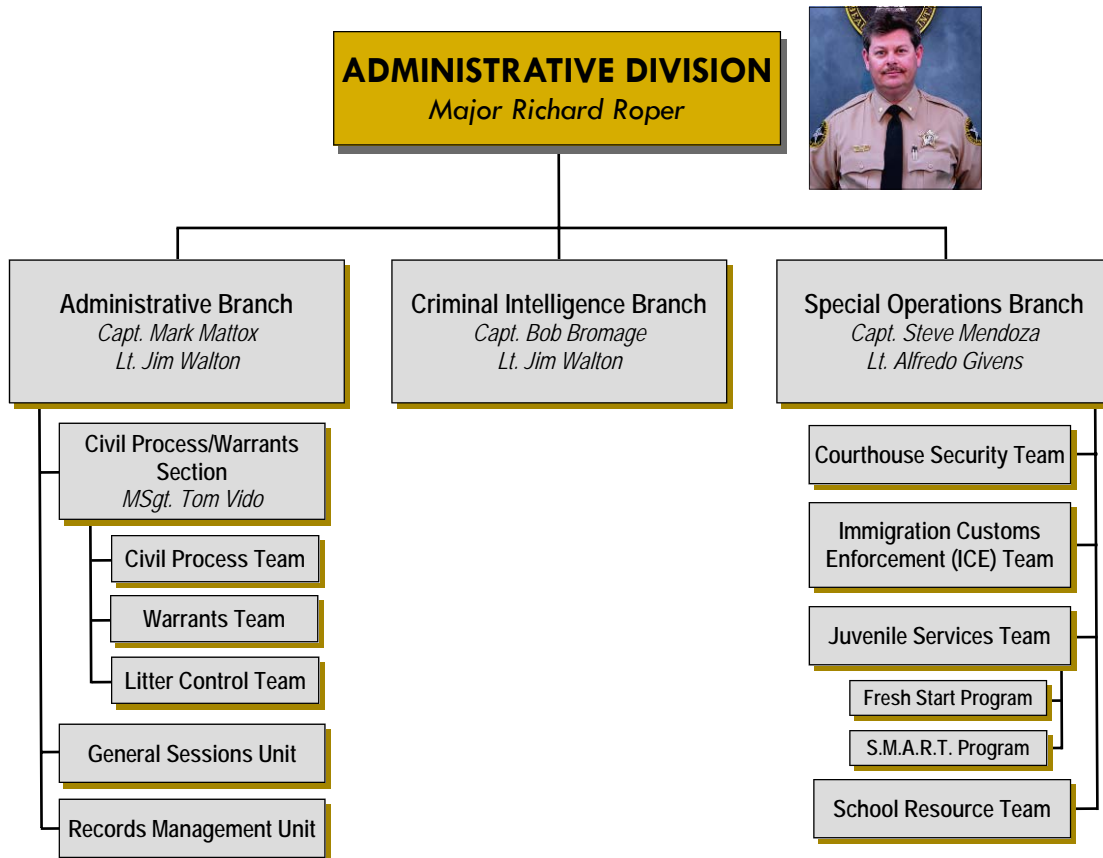
Criminal Records
Criminal Intelligence



Juvenile Services
Crisis Negotiations
Litter Control



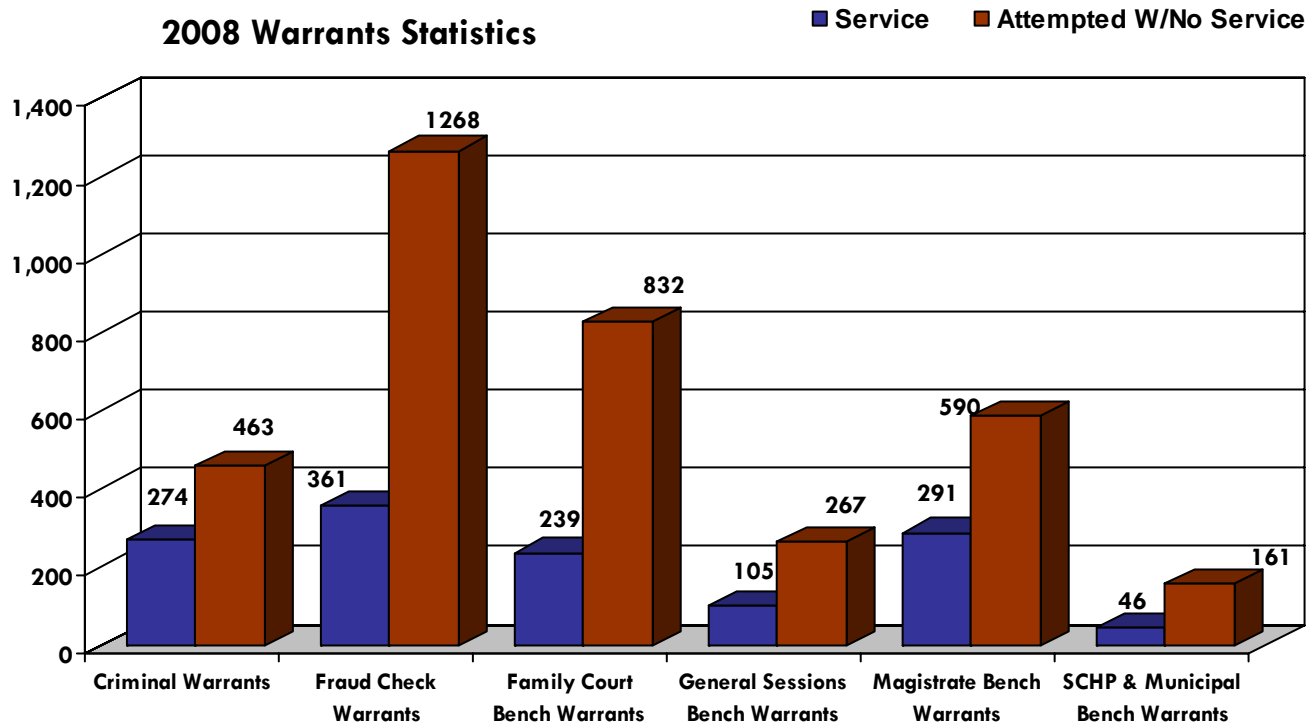
The Beaufort County Sheriff's Office Administrative Division is responsible for the administrative and support functions of the agency. Staffed by 38 law enforcement officers and 20 civilian employees, it lends support to the Enforcement Division and is responsible for numerous specialized functions within the Sheriff's Office.



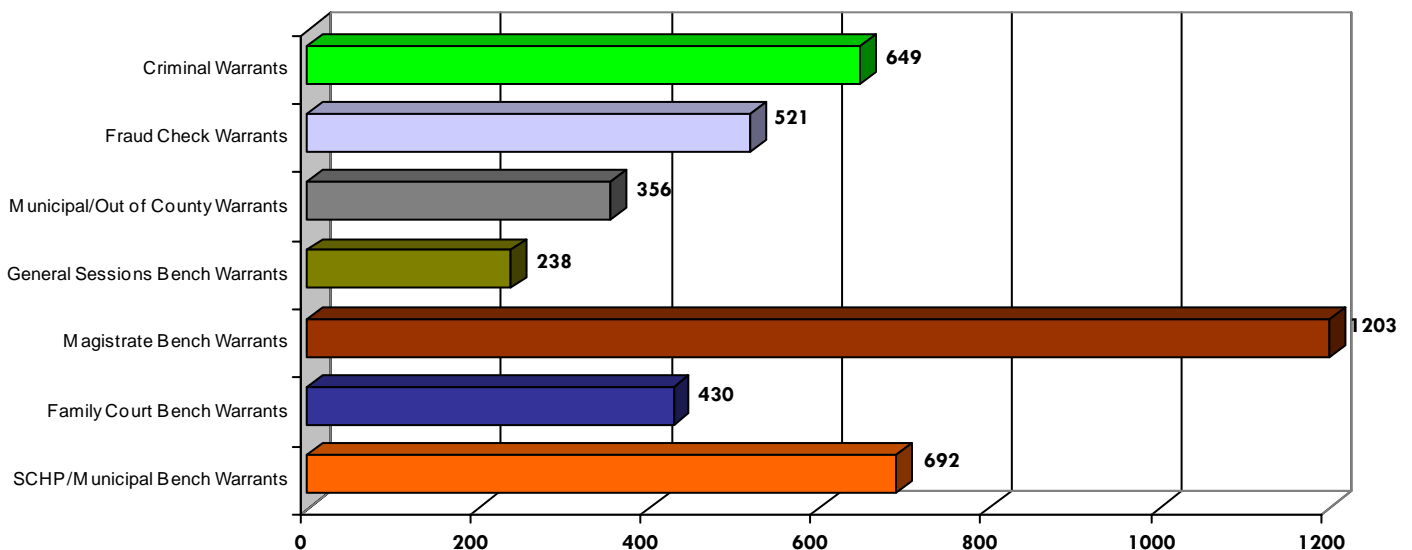
Commanded by Major Richard Roper, the Administration Division consists of three separate branches: the Administrative Branch, the Special Operations Branch and the Criminal Intelligence Branch. The Administrative Branch provides pro-active, non-traditional law enforcement as well as traditional support functions. The Special Operations Branch consists of other support elements such as the Courthouse Security Team, Juveniles Services Team, School Resource Team, Crisis Negotiations, DAPP Program (Domestic Abuse Prevention Program), and the 287(g) Program (a section of the Immigration and Nationality Act which allows for local law enforcement involvement in immigration investigations.) And the Criminal Intelligence Branch is primarily responsible for interdepartmental analysis of criminal data and reporting, as well as facilitating the sharing of criminal intelligence data between the Sheriff's Office and other local, state and federal law enforcement agencies.

Warrants Section

The Warrants Section officers are primarily responsible for the service of arrest warrants issued by various courts. The civilian employees who assist them are responsible for documenting all incoming warrants as well as documenting the disposition of warrants served.

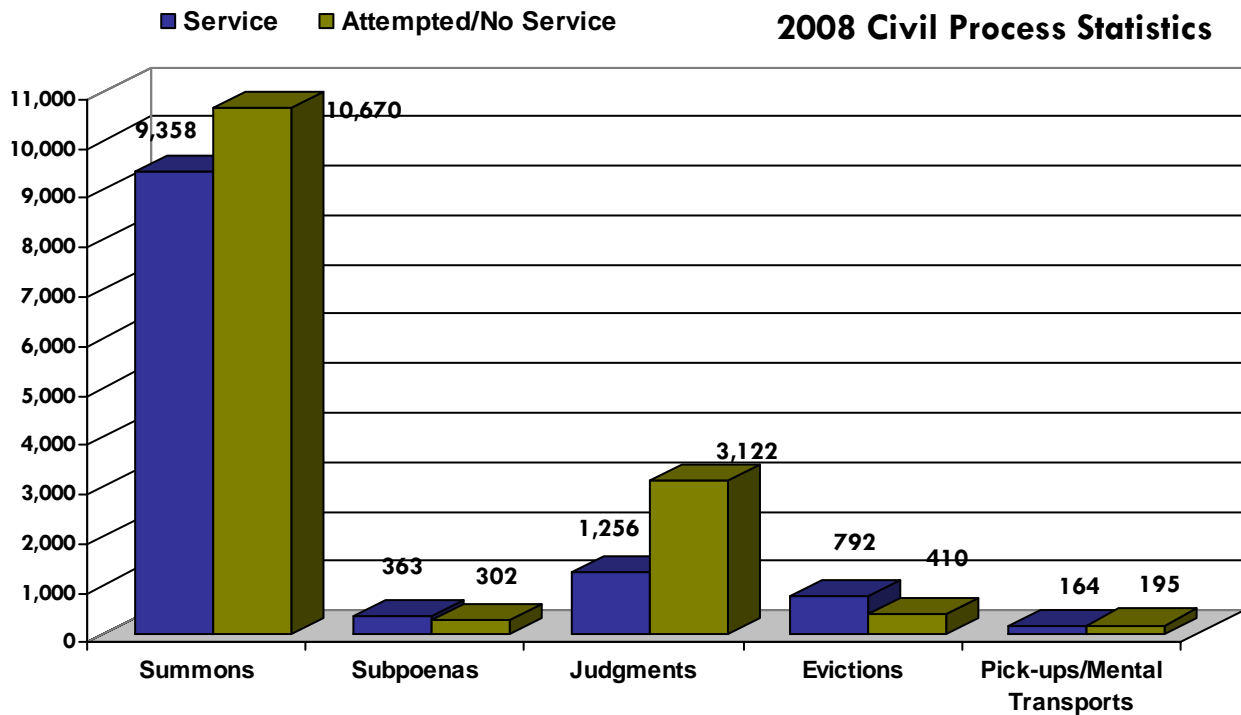


2008 Warrants Clerks - Warrants Received

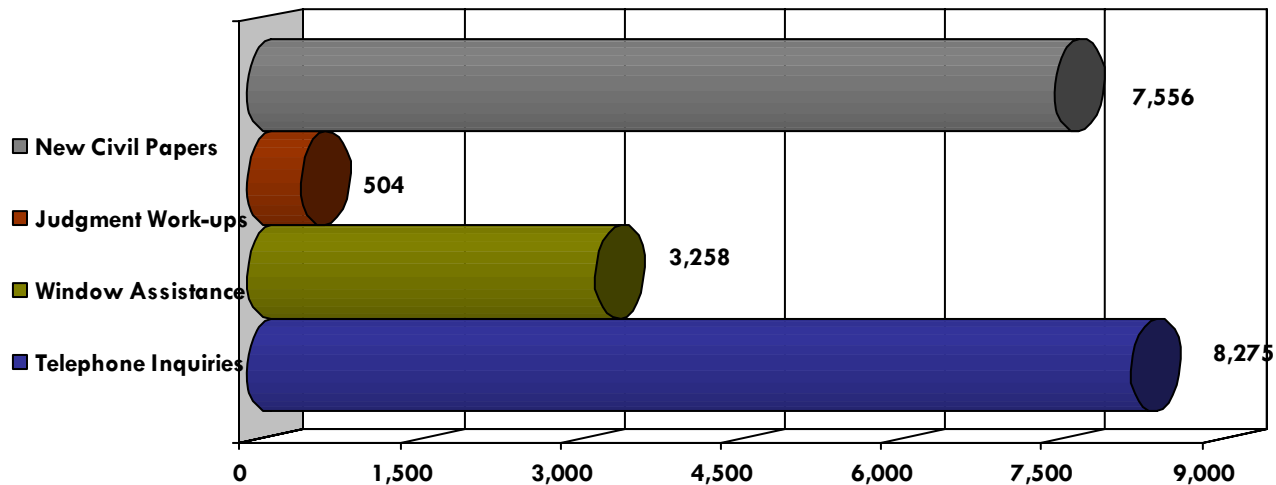


Civil Process Section

The Civil Process Section is tasked with serving court orders such as subpoenas, judgments and evictions. These officers also transport emotionally disturbed persons who are committed by Probate Court to various in-house treatment centers around the state. Tasked with providing assistance to the Enforcement Division as emergency circumstances may dictate, Civil Process officers routinely direct traffic at major accident scenes, stand post on perimeters during manhunts for wanted felons, and provide exterior security during barricaded subject situations in support of the Special Weapons and Tactics (S.W.A.T.) Team.



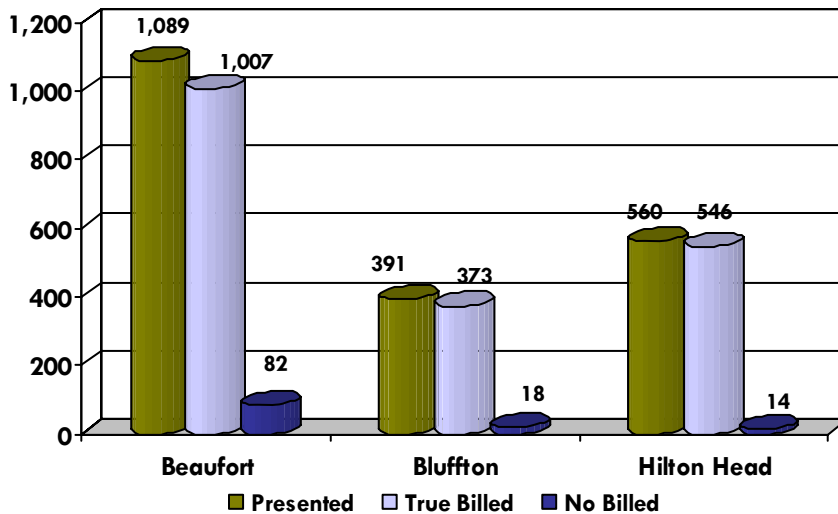
2008 Civil Process/Judgments Clerk Statistics



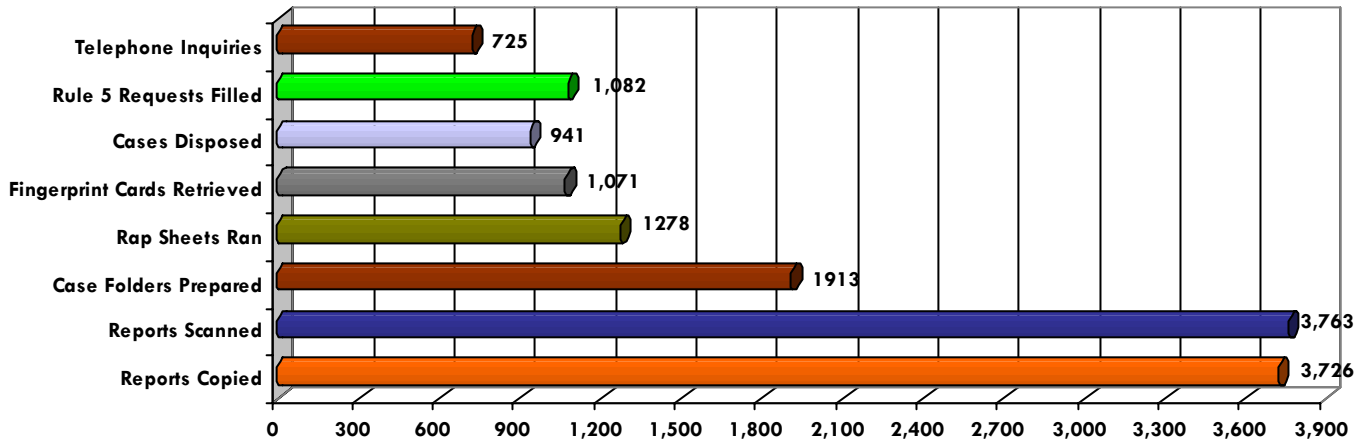
General Sessions Court

The General Sessions Court Coordinator is responsible for the management and maintenance of all Beaufort County Sheriff's Office criminal cases going to General Sessions Court and to the Beaufort County Grand Jury. They assist the Circuit Solicitor's Office, the Clerk of Court and case attorneys by providing them with case documentation needed for trial.

2008 General Sessions Indictments



2008 General Sessions Clerk Activity

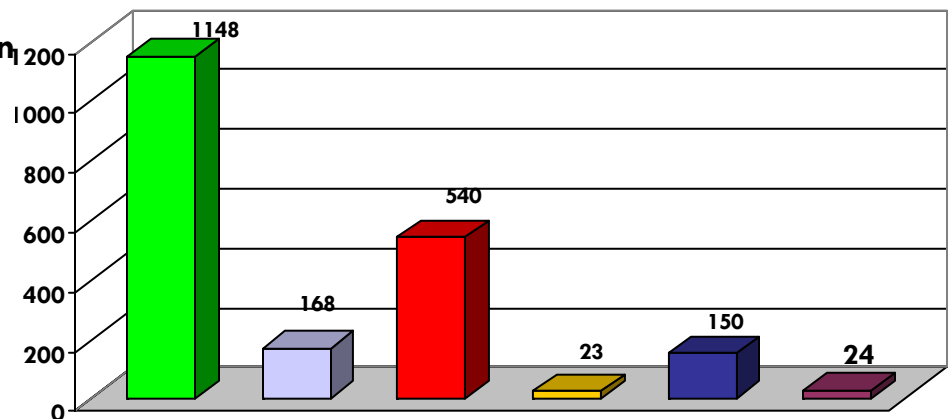


Courthouse Security

The Courthouse Security Section provides security for the Beaufort County Courthouse. The officers assigned to this section are responsible for the overall safety and security of all courtroom visitors, employees, jurors, judges and defendants.

2008 Courthouse Section

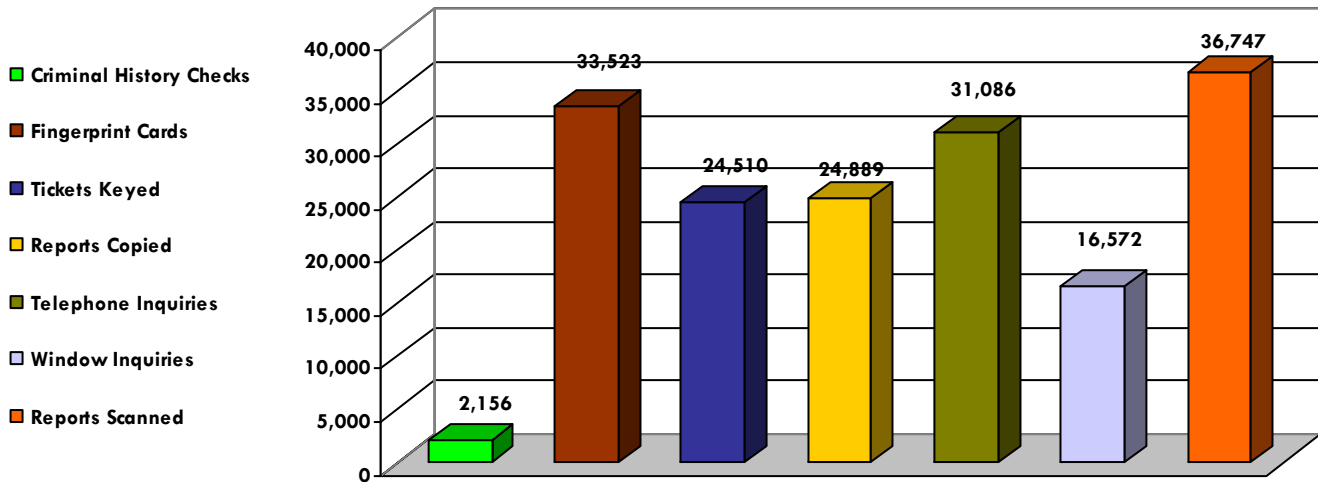
- Court Sessions Attended
- Transports
- Parking Tickets
- Warrants/Bench Warrants Served
- Arrests
- Incident Reports



Criminal Records

The Criminal Records Section is primarily responsible for the maintenance and proper storage of all written records. This section provides the South Carolina Law Enforcement Division with arrest data for Uniform Crime Reporting Statistics. Additionally, the Criminal Records Section processes incident reports, fingerprint cards, tickets, subpoenas, background/criminal history requests, insurance requests, Freedom of Information Act requests, telephone inquiries and walk-in requests.

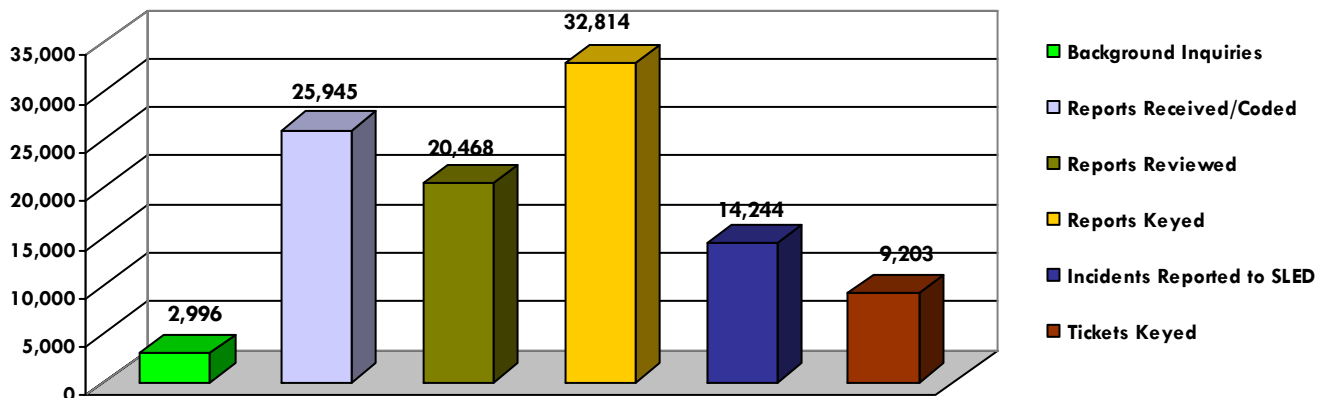
2008 Criminal Records



Criminal Intelligence

The Criminal Intelligence Section is primarily responsible for the gathering of criminal intelligence data, the compilation of statistics based on this data, and the submission of South Carolina Incident Based Reporting to the South Carolina Law Enforcement Division (S.L.E.D.). This section assists with interdepartmental analysis of criminal data and reporting, while also facilitating the sharing of criminal intelligence data between the Sheriff's Office and other local, state and federal law enforcement

2008 Criminal Intelligence



Juvenile Services

The Juvenile Services Section is designed to bridge the gap between juveniles and law enforcement. It consists of the School Resource Officer (S.R.O.) Program, the S.M.A.R.T. (Success, Motivation and Responsibility Training) Program and the Fresh Start Program. Juvenile Services also provides law enforcement for community events and assists other divisions of the Sheriff's Office as needed.

School Resource Officer (S.R.O.) Program

The School Resource Officer Program provides law enforcement officers for three middle schools and three high schools: Hilton Head Middle School (HHMS), Robert Smalls Middle School (RSMS), Whale Branch Middle School (WBMS), Academy for Career Excellence (ACE), Battery Creek High School (BCHS), and Hilton Head High School (HHHS).

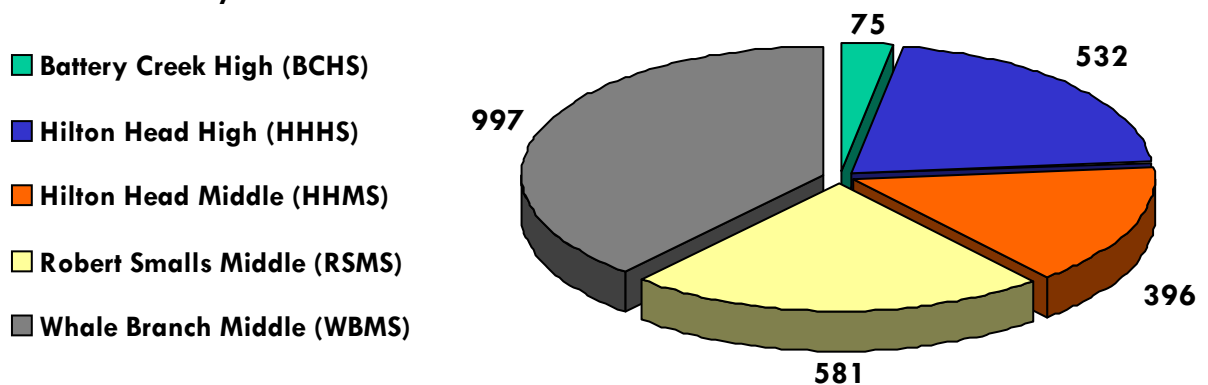
School Resource Officer Duties:

Law Enforcement

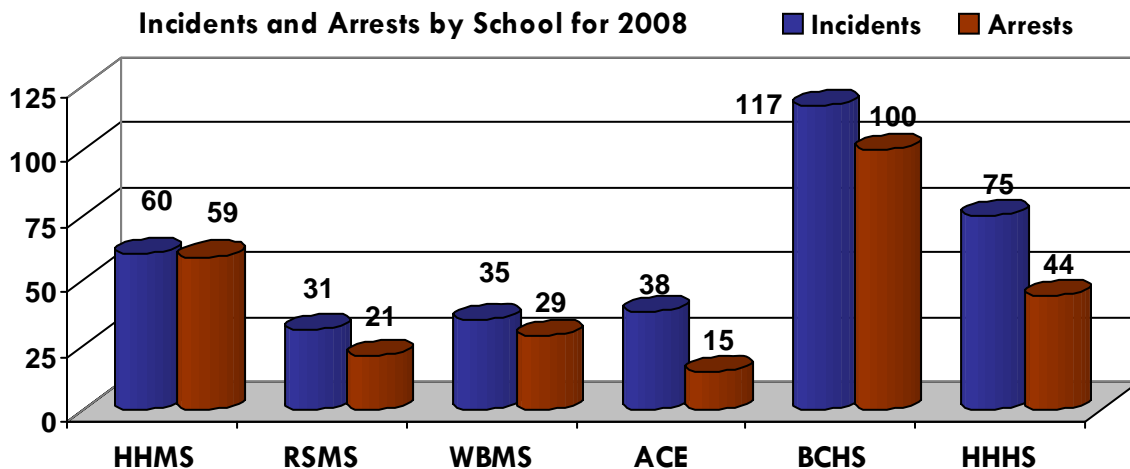
Law-Related Education

Limited Counseling (Peer mediation/conflict resolution)

Classes Conducted by School Resource Officers in Year 2008



Incidents and Arrests by School for 2008



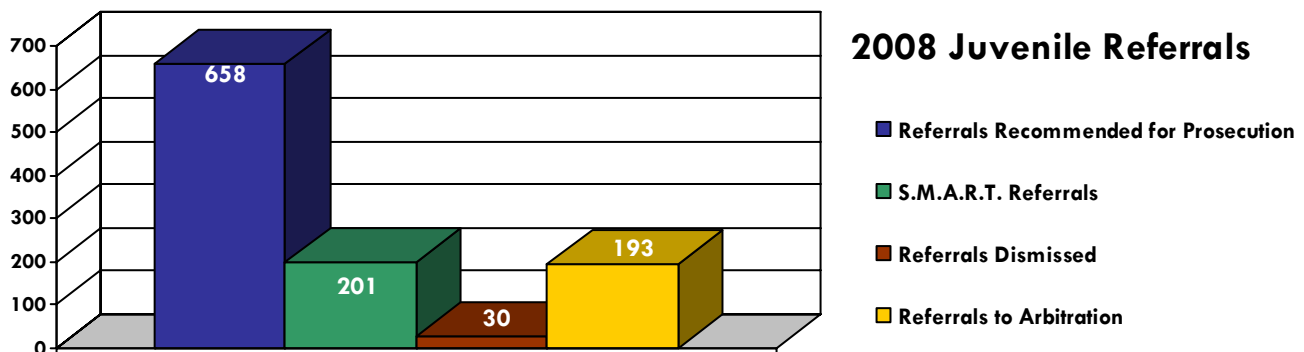
Fresh Start Program

The Fresh Start Program was implemented to provide families, law enforcement agencies and the Prosecutor's Office with a realistic and suitable alternative method to reduce the number of juveniles being ordered into family court, detention and probation.

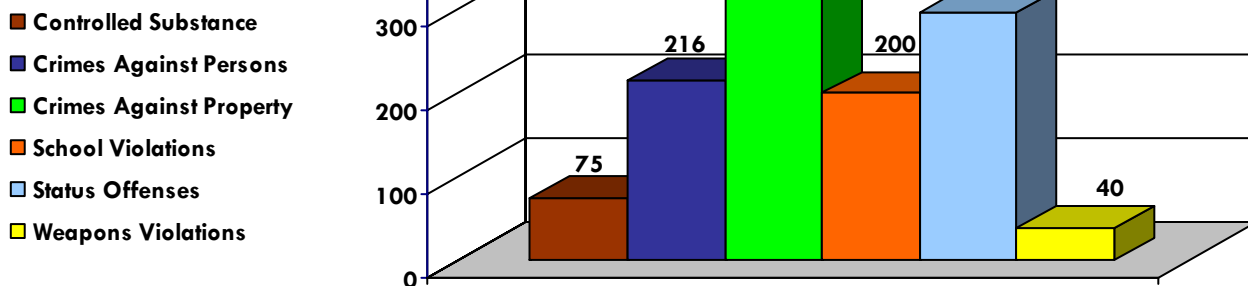
Goals and Objectives:	Provide intervention	Maintain accurate data
	Provide education	Facilitate awareness
	Promote interaction	Promote accountability
	Reduce recidivism	

Success, Motivation and Responsibility Training (S.M.A.R.T.)

The S.M.A.R.T. Program is designed to equip at-risk juveniles with skills and life principles necessary for successful goal setting and achievement, and to provide tools and resources for the authority figures involved in the daily lives of these juveniles. This program is employed as a deterrent for first-time non-violent student offenders between ten and sixteen years of age who seem to be heading toward criminal behavior.



2008 Juvenile Offenses by Category



Crisis Negotiation Team



The Beaufort County Sheriff's Office Crisis Negotiation team is specifically trained in the use of negotiation techniques designed to diffuse and resolve critical, high risk situations. Incidents involving barricaded subjects, hostage-takers, or persons threatening suicide represent especially trying and stressful moments for the law enforcement personnel who respond to them. When called upon, Crisis Negotiators must be able to establish contact with these individuals, identify their demands and work collectively to resolve tense and often volatile standoffs without loss of life. Prepared to respond to any part of Beaufort County or adjacent jurisdictions upon request, the Crisis Negotiation Team is on call seven days a week, twenty-four hours a day.

2008 Crisis Negotiation Statistics

Total Call-Outs: 5
 Barricaded - 1 (adults)
 Attempted Suicide - 3 (adults)

For more information regarding the Crisis Negotiation Team, Please contact team supervisor, Captain Steve Mendoza, at (843) 470-3207.

Litter Control

Keep Beaufort County Beautiful, The Coalition Against Litter, and the Beaufort County Sheriff's Office have implemented a way for Beaufort County citizens to help fight litter in Beaufort County. In September of 2001, Sheriff P.J. Tanner, along with Keep Beaufort County Beautiful, launched an anti-litter campaign.

When the Sheriff's Office receives a citizen report of a littering incident, our Litter Control Officers attempt to identify the violator. If the violator is identified, the Sheriff's Office sends the violator a letter explaining the law and its consequences. If there is enough evidence to issue a citation, violators could face up to a \$1,000 fine and/or community service.

In 2008, our Litter Control Officers received 399 complaints, and issued 184 citations and 144 written warnings.



Crime Stoppers is an established local hotline that enables individuals to call the Beaufort County Sheriff's Office toll free with information about any crime occurring in Beaufort County. The caller may remain anonymous and, in some cases, could receive a reward for the information provided.



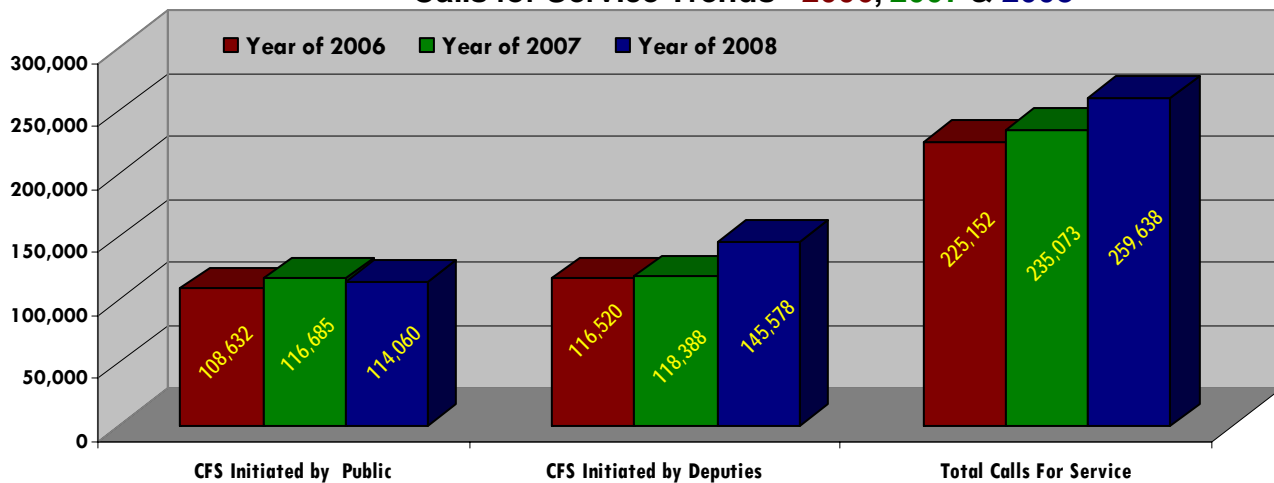
BEAUFORT COUNTY SHERIFF'S OFFICE

Activity Comparisons - 2006, 2007 and 2008

BCSO ACTIVITY	2006	(% Change)	2007	(% Change)	2008	(% Change)
Calls for Service	225,152	12.6%	235,073	4.4%	259,638	10.4%
<i>Proactive Calls</i>	116,520	24.3%	118,388	1.6%	145,578	23.0%
Incident Reports	23,769	-3.0%	21,880	-7.9%	20,596	-5.9%
Arrests	6324	1.2%	6,194	-2.1%	6,988	12.8%
Uniform Traffic Summons	20,062	6.6%	25,781	28.5%	24,004	-6.9%
Warrants Served	4,215	6.1%	3,789	-10.1%	3,899	2.9%

BEAUFORT COUNTY SHERIFF'S OFFICE

Calls for Service Trends - 2006, 2007 & 2008



BEAUFORT COUNTY INDEX CRIME - 2006, 2007 and 2008

	AGENCY	Murder	Rape, Forcible	Robbery	Aggravated Assault	Violent Subtotals	Breaking & Entering	Larceny	Motor Vehicle Theft	Non-Violent Subtotals	TOTAL INDEX CRIME
2006	BCSO	6	37	128	580	751	999	2,717	270	3,986	4,737
	Beaufort PD	1	10	34	108	153	186	591	43	820	973
	Bluffton PD	0	2	7	37	46	80	222	21	323	369
	Port Royal PD	0	1	10	17	28	44	214	8	266	294
	COUNTY TOTALS	7	50	179	742	978	1,309	3,744	342	5,395	6,373
2007	BCSO	7	22	128	515	672	944	2,629	265	3,838	4,510
	Beaufort PD	0	2	35	109	146	139	663	43	845	991
	Bluffton PD	0	0	10	42	52	52	277	17	346	398
	Port Royal PD	1	1	10	8	20	31	208	9	248	268
	COUNTY TOTALS	8	25	183	674	890	1,166	3,777	334	5,277	6,167
2008	BCSO	6	17	126	554	703	1,138	2,774	270	4,182	4,885
	Beaufort PD	0	7	41	123	171	161	638	33	832	1,003
	Bluffton PD	0	3	16	32	51	68	285	12	365	416
	Port Royal PD	0	4	7	24	35	49	211	15	275	310
	COUNTY TOTALS	6	31	190	733	960	1,416	3,908	330	5,654	6,614